

台北 101 Taipei 101/台北 101 購物中心 Taipei 101 Mall



台北 101 開放參觀時間：(一)~(日)10:00-21:00

台北 101 購物中心開放時間：(一)~(四)11:00-21:30/ (五)~(日)11:00-22:00

交通方式(transportation):

捷運(約 50 分鐘)

步行 11 分鐘→捷運新埔站(藍線/往南港展覽館)→捷運市政府站出口 2→步行 15 分鐘

MRT (Approximately 50 minutes)

Walk for 11 minutes → Take the MRT at Xinpu Station (Blue Line / toward Nangang Exhibition Center) → Exit at MRT City Hall Station, Exit 2 → Walk for 15 minutes.

公車(約 53 分鐘)

步行 4 分鐘(致理科技大學(文化路)公車站)→搭乘 245/264/656/701 公車(致理科技大學(文化路)-華江橋)→仁愛幹線公車(華江橋-市政府(市府)) →步行約 8 分鐘

Bus (Approximately 53 minutes)

Walk for 4 minutes to Chihlee University (Wenhua Road) Bus Stop → Take Bus 245/264/656/701 (from Chihlee University (Wenhua Road) to Huajiang Bridge) → Transfer to Ren'ai Main Line Bus (from Huajiang Bridge to City Hall) → Walk for about 8 minutes.

地址： 110 台北市信義區市府路 45 號

Address: No. 45, Shifu Rd., Xinyi District, Taipei City 110, Taiwan

赤峰街商圈 Chifeng Street



交通方式(transportation):

捷運(約 30 分鐘)

步行 11 分鐘→捷運新埔站(藍線/往南港展覽館)→捷運西門站(藍線轉綠線)→捷運西門站(綠線/往松山)→捷運中山站 4 號出口

MRT (Approximately 30 minutes)

Walk for 11 minutes → Take the MRT at Xipu Station (Blue Line / toward Nangang Exhibition Center) → Transfer at Ximen Station (from Blue Line to Green Line) → Take the MRT at Ximen Station (Green Line / toward Songshan) → Exit at Zhongshan Station, Exit 4.

公車(約 27 分鐘)

步行 4 分鐘(致理科技大學(文化路)公車站)→搭乘 310 公車(致理科技大學(文化路)-中山市場)→步行約 3 分鐘→中山

Bus (Approximately 27 minutes)

Walk for 4 minutes to Chihlee University (Wenhua Road) Bus Stop → Take Bus 310 (from Chihlee University (Wenhua Road) to Zhongshan Market) → Walk for about 3 minutes → Arrive at Zhongshan.

地址:10491 台北市中山區中山北路二段 48 巷 7 號

Address: No. 7, Ln. 48, Sec. 2, Zhongshan N. Rd., Zhongshan District, Taipei City 10491, Taiwan

象山步道 Taipei Xiangshan Hiking Trail



交通方式：

捷運(約 1 小時 5 分鐘)

步行 11 分鐘→捷運新埔站(藍線/往南港展覽館)→捷運台北車站站(藍線轉紅線)→捷運台北車站站(紅線/往象山)→捷運象山站出口 3→步行 13 分鐘

MRT (Approximately 1 hour 5 minutes)

Walk for 11 minutes → Take the MRT at Xinpu Station (Blue Line / toward Nangang Exhibition Center) → Transfer at Taipei Main Station (from Blue Line to Red Line) → Take the MRT at Taipei Main Station (Red Line / toward Xiangshan) → Exit at Xiangshan Station, Exit 3 → Walk for 13 minutes.

公車(約 58 分鐘)

步行 4 分鐘(致理科技大學(文化路)公車站)→搭乘 264/656/701 公車(致理科技大學(文化路)-中國時報)→仁愛幹線公車(中國時報-國稅局宿舍)→步行約 5 分鐘

Bus (Approximately 58 minutes)

Walk for 4 minutes to Chihlee University (Wenhua Road) Bus Stop → Take Bus 264/656/701 (from Chihlee University (Wenhua Road) to China Times) → Transfer to Ren'ai Main Line Bus (from China Times to National Tax Bureau Dormitory) → Walk for about 5 minutes.

地址： 110 台北市信義區

Address: Xinyi District, Taipei City 110, Taiwan

西門町 Ximending



交通方式(transportation):

捷運(約 27 分鐘)

步行 11 分鐘→捷運新埔站(藍線/往南港展覽館)→捷運西門站出口 6

MRT (Approximately 27 minutes)

Walk for 11 minutes → Take the MRT at Xinpu Station (Blue Line / toward Nangang Exhibition Center) → Exit at Ximen Station, Exit 6.

公車(約 32 分鐘)

步行 4 分鐘(致理科技大學(文化路)公車站)→搭乘 701 公車(致理科技大學(文化路)-中華路北站)→步行 4 分鐘

Bus (Approximately 32 minutes)

Walk for 4 minutes to Chihlee University (Wenhua Road) Bus Stop → Take Bus 701 (from Chihlee University (Wenhua Road) to Zhonghua Road North Station) → Walk for 4 minutes.

地址: 108 台北市萬華區

Address: Wanhua District, Taipei City 108, Taiwan

饒河夜市 Raohe Street Night Market



交通方式(transportation):

捷運(約 46 分鐘)

步行 11 分鐘→捷運新埔站(藍線/往南港展覽館)→捷運西門站(藍線轉綠線)→捷運西門站(綠線/往松山)→捷運松山站出口 2→步行 4 分鐘

MRT (Approximately 46 minutes)

Walk for 11 minutes → Take the MRT at Xinyu Station (Blue Line / toward Nangang Exhibition Center) → Transfer at Ximen Station (from Blue Line to Green Line) → Take the MRT at Ximen Station (Green Line / toward Songshan) → Exit at Songshan Station, Exit 2 → Walk for 4 minutes.

公車(約 56 分鐘)

步行 4 分鐘(致理科技大學(文化路)公車站)→搭乘 264/701(致理科技大學(文化路)-祖師廟(康定))→搭乘 205(祖師廟(康定)-松山農會)→步行 2 分鐘

Bus (Approximately 56 minutes)

Walk for 4 minutes to Chihlee University (Wenhua Road) Bus Stop → Take Bus 264/701 (from Chihlee University (Wenhua Road) to Zushi Temple (Kangding)) → Transfer to Bus 205 (from Zushi Temple (Kangding) to Songshan Farmers' Association) → Walk for 2 minutes.

地址: 105 台北市松山區饒河街

Address: Raohe St., Songshan District, Taipei City 105, Taiwan

中正紀念堂/自由廣場 National Chiang Kai-shek Memorial Hall



交通方式(transportation):

捷運(約 35 分鐘)

步行 11 分鐘→捷運新埔站(藍線/往南港展覽館)→捷運西門站(藍線轉綠線)→捷運西門站(綠線/往新店)→捷運中正紀念堂站出口 5

MRT (Approximately 35 minutes)

Walk for 11 minutes → Take the MRT at Xinpu Station (Blue Line / toward Nangang Exhibition Center) → Transfer at Ximen Station (from Blue Line to Green Line) → Take the MRT at Ximen Station (Green Line / toward Xindian) → Exit at Chiang Kai-Shek Memorial Hall Station, Exit 5.

公車(47 分鐘)

步行 4 分鐘(致理科技大學(文化路)公車站)→搭乘 245(致理科技大學(文化路)-一女中(貴陽))→步行 13 分鐘

Bus (Approximately 47 minutes)

Walk for 4 minutes to Chihlee University (Wenhua Road) Bus Stop → Take Bus 245 (from Chihlee University (Wenhua Road) to First Girls' High School (Guiyang)) → Walk for 13 minutes.

地址:100 台北市中正區

Address: Zhongzheng District, Taipei City 100, Taiwan

台北霞海城隍廟 Taipei Xia-Hai City God Temple

台北迪化街 Taipei Dihua Street



交通方式(transportation):

捷運(約 41 分鐘)

步行 11 分鐘→捷運新埔站(藍線/往南港展覽館)→捷運西門站(藍線轉綠線)→捷運西門站(綠線/往松山)→捷運北門站出口 3→步行 15 分鐘

MRT (Approximately 41 minutes)

Walk for 11 minutes → Take the MRT at Xinpu Station (Blue Line / toward Nangang Exhibition Center) → Transfer at Ximen Station (from Blue Line to Green Line) → Take the MRT at Ximen Station (Green Line / toward Songshan) → Exit at Beimen Station, Exit 3 → Walk for 15 minutes.

公車(約 56 分鐘)

步行 4 分鐘(致理科技大學(文化路)公車站)→搭乘 264(致理科技大學(文化路)-龍山寺(康定))→搭乘 9(龍山寺(康定)-民生西路口(大稻埕碼頭))→步行 4 分鐘

Bus (Approximately 56 minutes)

Walk for 4 minutes to Chihlee University (Wenhua Road) Bus Stop → Take Bus 264 (from Chihlee University (Wenhua Road) to Longshan Temple (Kangding)) → Transfer to Bus 9 (from Longshan Temple (Kangding) to Minsheng West Road Intersection (Dadaocheng Wharf)) → Walk for 4 minutes.

地址：台北市大同區迪化街一段

Address: Section 1, Dihua St., Datong District, Taipei City, Taiwan

臺北市立美術館 Taipei Fine Arts Museum



開放參觀時間：(一)休息/ (二)~(五)、(日)9:30-17:30 / (六)9:30-20:30

交通方式：

捷運(約 53 分鐘)

步行 11 分鐘→捷運新埔站(藍線/往南港展覽館)→捷運台北車站站(藍線轉紅線)→捷運台北車站站(紅線/往淡水)→捷運圓山站出口 3→步行 12 分鐘

MRT (Approximately 53 minutes)

Walk for 11 minutes → Take the MRT at Xinpu Station (Blue Line / toward Nangang Exhibition Center) → Transfer at Taipei Main Station (from Blue Line to Red Line) → Take the MRT at Taipei Main Station (Red Line / toward Tamsui) → Exit at Yuanshan Station, Exit 3 → Walk for 12 minutes.

公車(約 47 分鐘)

步行 4 分鐘(致理科技大學(文化路)公車站)→搭乘 310(致理科技大學(文化路)-台北市立美術館)→步行 2 分鐘

Bus (Approximately 47 minutes)

Walk for 4 minutes to Chihlee University (Wenhua Road) Bus Stop → Take Bus 310 (from Chihlee University (Wenhua Road) to Taipei Fine Arts Museum) → Walk for 2 minutes.

地址：10491 台北市中山區中山北路三段 181 號

Address: No. 181, Sec. 3, Zhongshan N. Rd., Zhongshan District, Taipei City 10491, Taiwan

台北永康街 Taipei Yongkang Street



交通方式(transportation):

捷運(約 37 分鐘)

步行 11 分鐘→捷運新埔站(藍線/往南港展覽館)→捷運忠孝新生站(藍線轉橘線)→捷運忠孝新生站(橘線/往南勢角)→捷運東門站出口 5→步行 2 分鐘

MRT (Approximately 37 minutes)

Walk for 11 minutes → Take the MRT at Xinpu Station (Blue Line / toward Nangang Exhibition Center) → Transfer at Zhongxiao Xinsheng Station (from Blue Line to Orange Line) → Take the MRT at Zhongxiao Xinsheng Station (Orange Line / toward Nanshijiao) → Exit at Dongmen Station, Exit 5 → Walk for 2 minutes.

公車(約 44 分鐘)

步行 4 分鐘(致理科技大學(文化路)公車站)→搭乘 701(致理科技大學(文化路)-中國時報)→搭乘 38(中國時報-信義永康街口(捷運東門站))→步行 2 分鐘

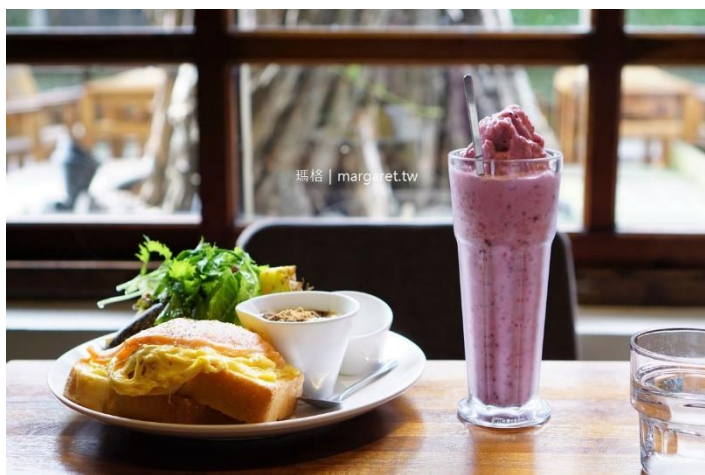
Bus (Approximately 44 minutes)

Walk for 4 minutes to Chihlee University (Wenhua Road) Bus Stop → Take Bus 701 (from Chihlee University (Wenhua Road) to China Times) → Transfer to Bus 38 (from China Times to Xinyi-Yongkang St. Intersection (Dongmen MRT Station)) → Walk for 2 minutes.

地址: 106 台北市大安區永康街

Address: Yongkang St., Daan District, Taipei City 106, Taiwan

華山 1914 文化創意產業園區 Huashan 1914 Creative Park



交通方式:

捷運(約 33 分鐘)

步行 11 分鐘→捷運新埔站(藍線/往南港展覽館)→捷運忠孝新生站出口 1→步行 6 分鐘

MRT (Approximately 33 minutes)

Walk for 11 minutes → Take the MRT at Xinpu Station (Blue Line / toward Nangang Exhibition Center) → Exit at Zhongxiao Xinsheng Station, Exit 1 → Walk for 6 minutes.

公車(約 49 分鐘)

步行 11 分鐘至莊敬公園公車站→搭乘 604(莊敬公園-捷運善導寺站)→步行 11 分鐘

Bus (Approximately 49 minutes)

Walk for 11 minutes to Zhuangjing Park Bus Stop → Take Bus 604 (from Zhuangjing Park to Shandao Temple MRT Station) → Walk for 11 minutes.

地址: 100 台北市中正區八德路一段 1 號

Address: No. 1, Sec. 1, Bade Rd., Zhongzheng District, Taipei City 100, Taiwan